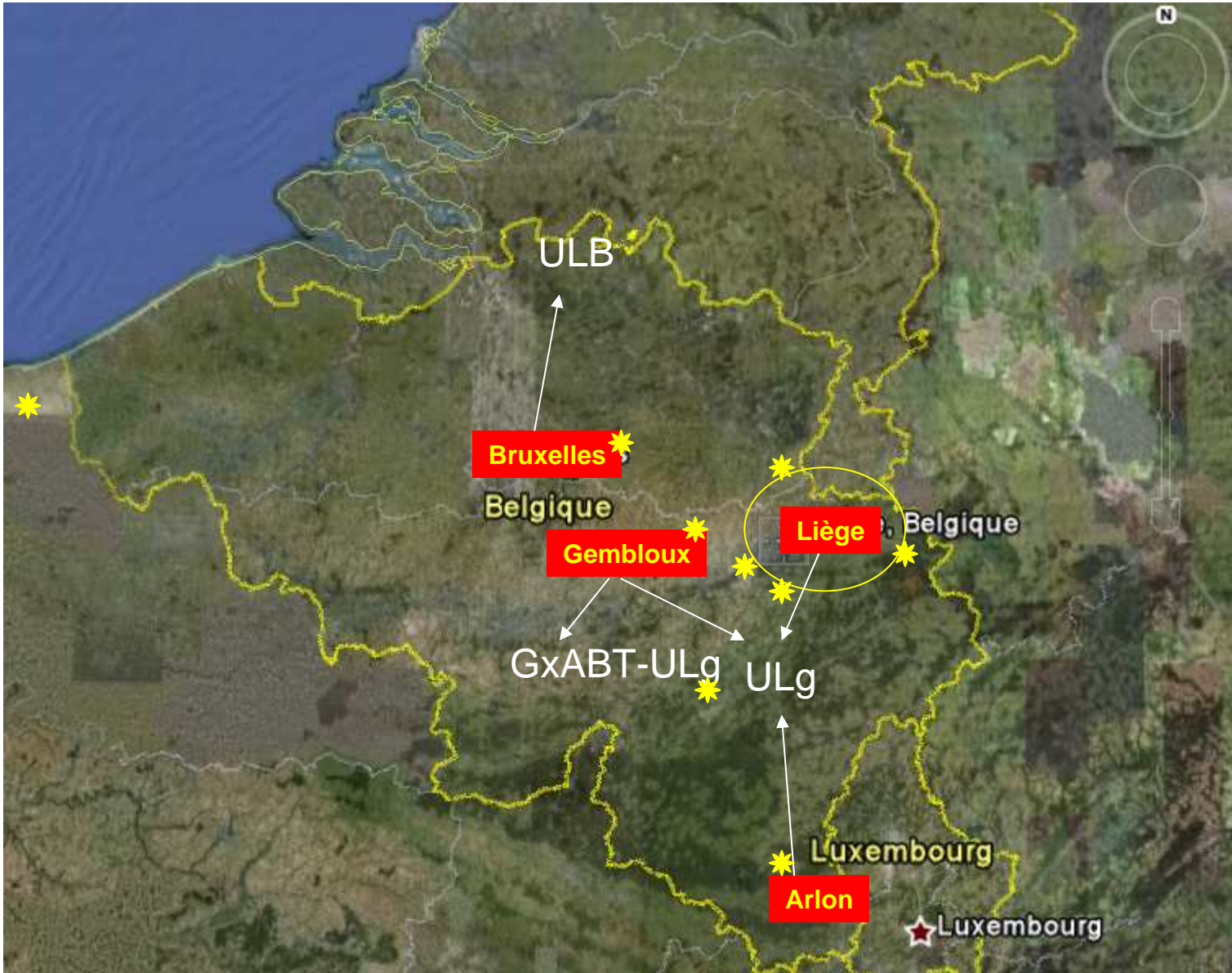


MC IU GRAVMT, ULg-FUSAGx, année académique 2011-2012.

# Plans, accès, lieux



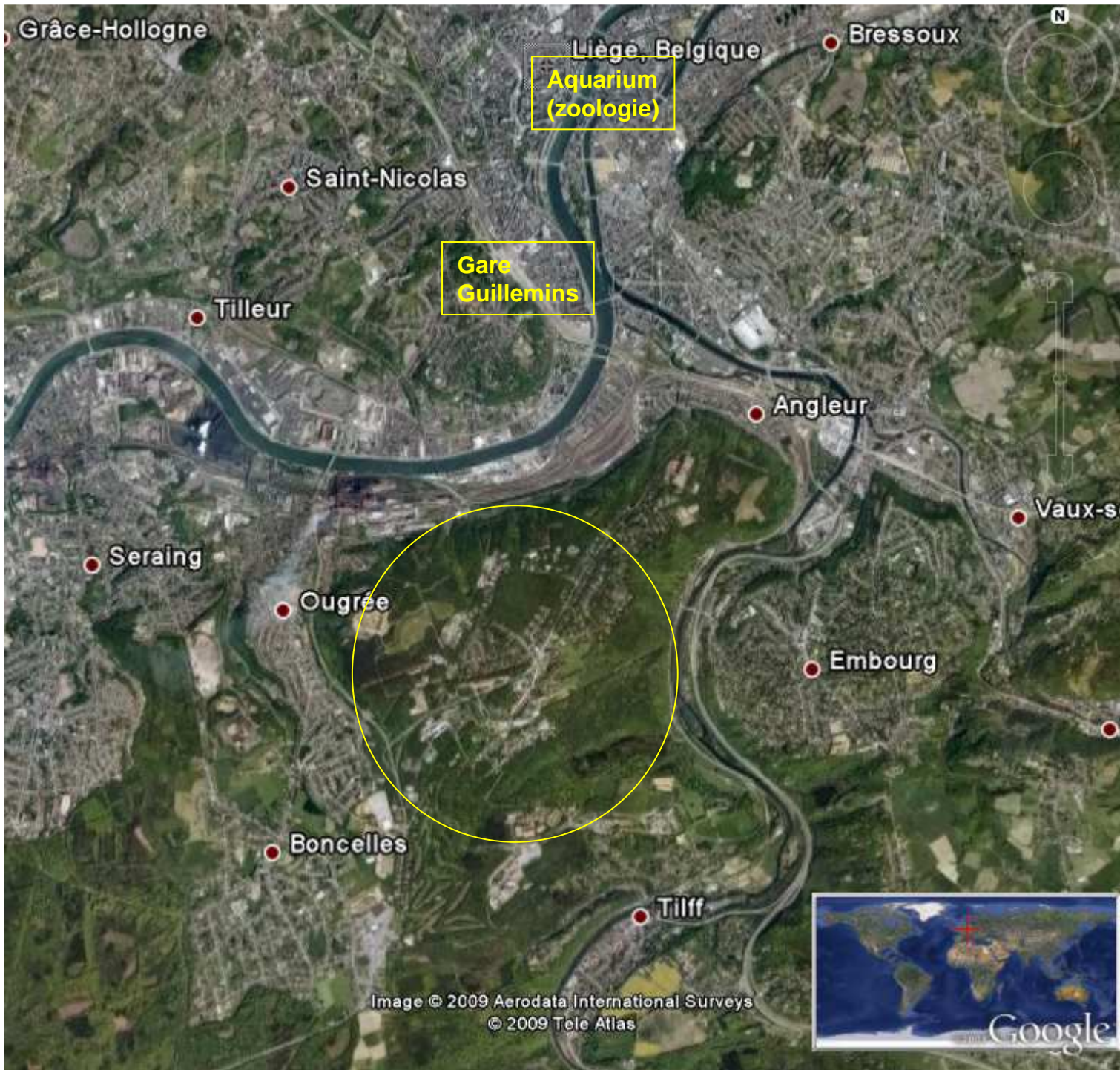


Image © 2009 Aerodata International Surveys  
© 2009 Tele Atlas





Image © 2009 Aerodata International Surveys  
© 2009 Tele Atlas

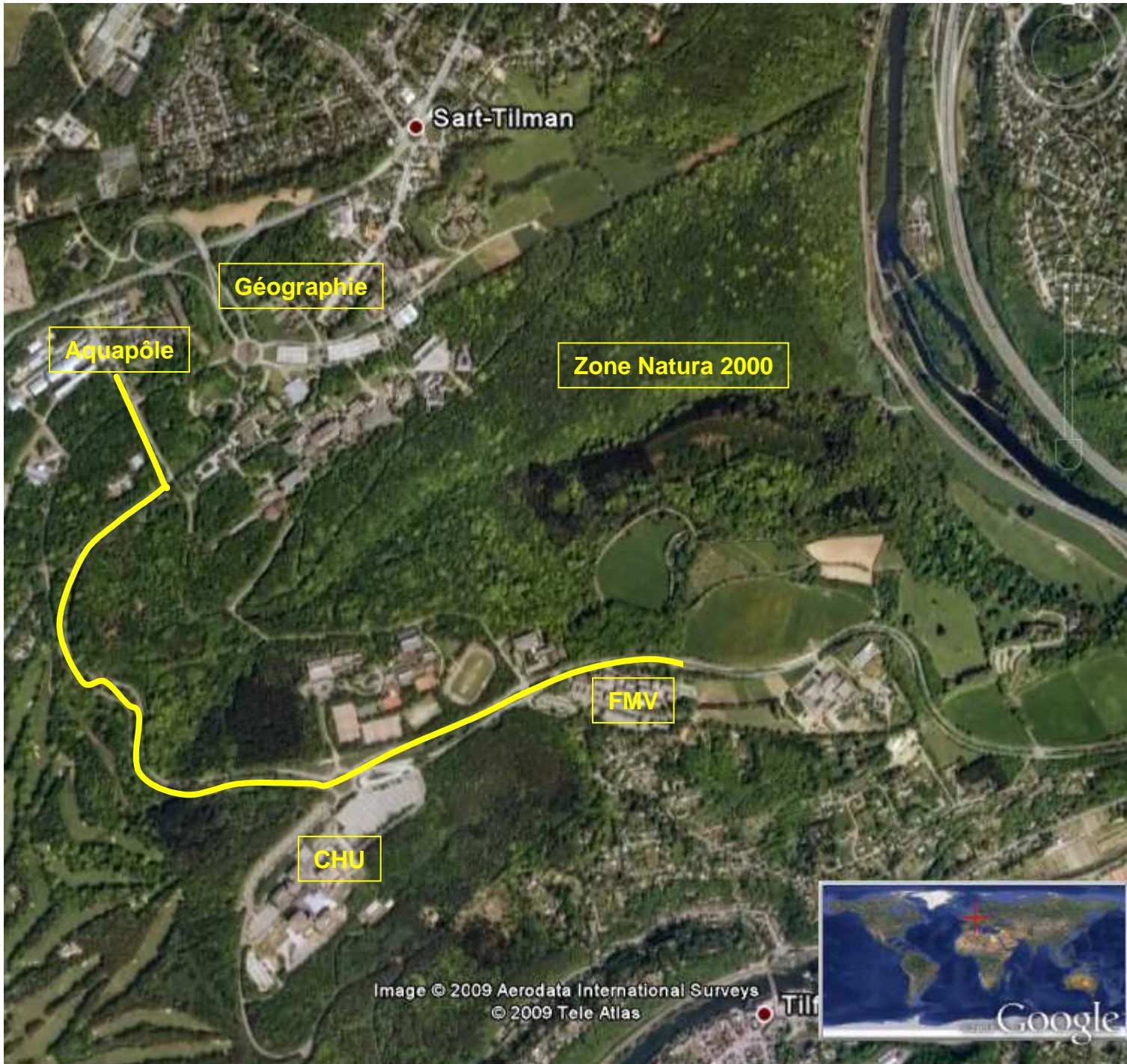
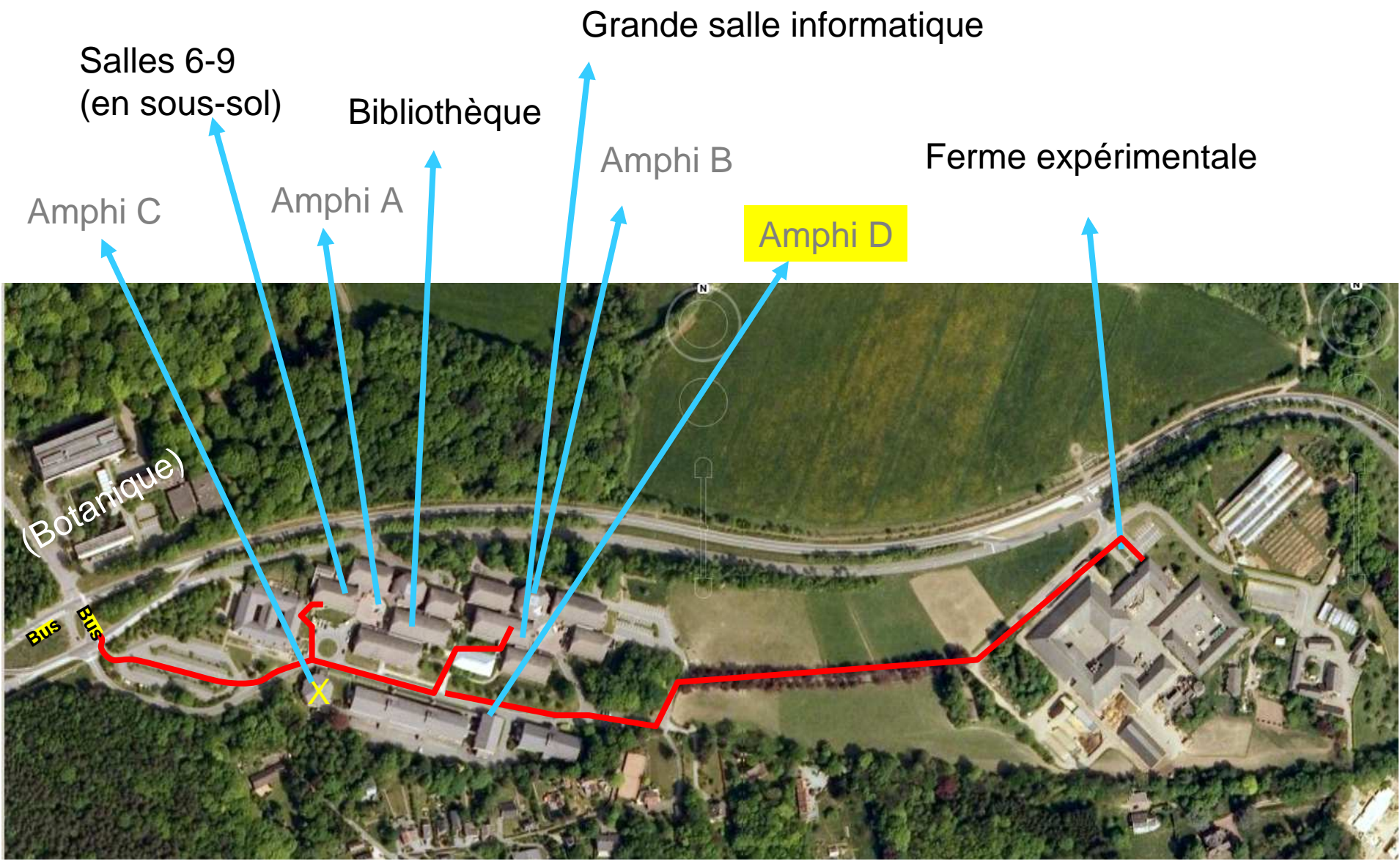


Image © 2009 Aerodata International Surveys  
© 2009 Tele Atlas





Salles 6-9  
(en sous-sol)

Bibliothèque

Grande salle informatique

Amphi B

Ferme expérimentale

Amphi C

Amphi A

Amphi D

(Botanique)

BTS

BTS